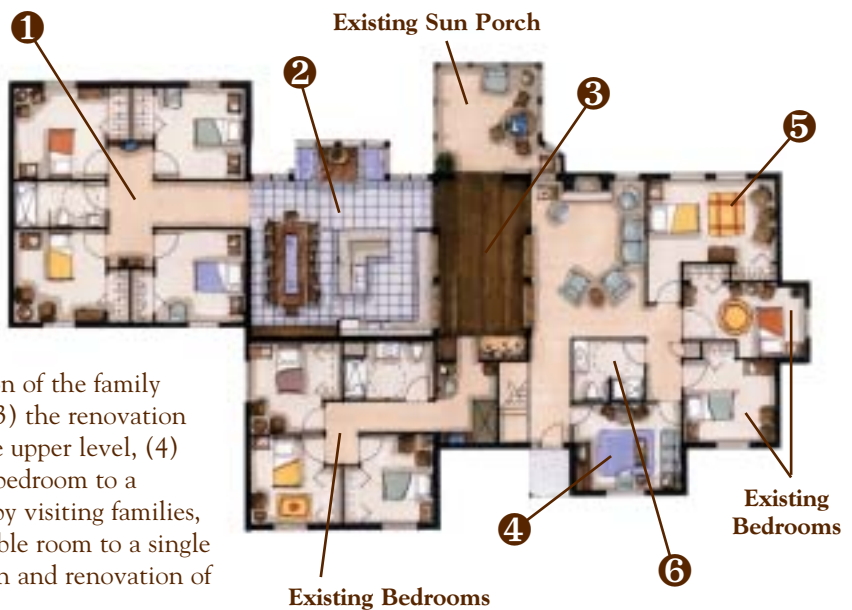


Gianna Homes—Sursum Corda Expansion Project

This artist's rendering shows what the front of Gianna Homes—Sursum Corda will look like from the street. The new addition is to the left, above the archway over the existing driveway to the lower level entrance and parking area.



Upper Level: This floor plan shows the upper level of our home after the new addition and remodeling have been completed. The Expansion Project includes (1) the addition of four new bedrooms and a large, accessible bathroom, (2) an expansion and renovation of the family dining room and kitchen, (3) the renovation of new activity space on the upper level, (4) the renovation of a former bedroom to a private front parlor for use by visiting families, (5) the conversion of a double room to a single room, and (6) the expansion and renovation of a second resident bathroom.



Lower Level: Improvements on the lower level for residents include (1) a private room for massage and physical therapy, (2) relocation of the Chapel to provide views of the garden, and (3) addition of a covered, accessible entry on the lower level. The project will also add space for (4) employees, (5) an office and meeting room, and (6) storage/utility functions.

This Expansion Project will add 2,500 sq. ft. of new space to the upper and lower levels. The upper level will also feature 1,850 sq. ft. of renovated space to make the home more accessible, comfortable, and convenient for residents. The Expansion Project utilizes design features that preserve a home-like atmosphere and encourage residents to celebrate each day and remain as independent as possible.